

## Gift giving KNC Contributors 2002

### Individual

William Cetin  
St. Ben's Friends

### Family

Dr./Mrs. David O. Monson  
Joyce R. Hardwick  
M/M W.J. Morrissey  
M/M Orville Helland  
Frank Drabek  
Roger H. Wolff  
M/M Gene E. Park  
Margaret A. Hopkins  
Nancy B. Black  
Charles Clemen  
Elaine MacAlister  
M/M Martin McCarthy

### Sponsor

M/M Roger Nathan  
Walworth State Bank  
Mid-America Bank  
M/M Carl A. Grunschel  
M/M Joseph Binder  
M/M Thomas A. Lothian  
M/M Ralph Decker

### Donor

Congress Club, Inc.  
James N. Kraft  
Donald R. Taylor  
John K. Notz, Jr. Trust  
Koenig Charitable Limited Partnership  
Earl H. Swanson  
Burlington Lions club  
Williams Bay Women's Civic League  
Geneva Lake Auxiliary to  
V.F.W. Post 2373  
M/M Thomas Johnson  
M/M Donald Parker  
Rev./M Calvin Kuder  
Joan Gundersen, REV Trust  
Mrs. Lorraine Lovell  
Mrs. Virginia Hasek

### Patron

M/M James Bowman

### Benefactor

Otzen Family Foundation  
Wisconsin Lions Club District 27-A1  
Lake Geneva Garden Club  
Foundation, Inc.  
Dr/M Norman Greenfield  
Alice J. Morava  
M/M David L. Everhart  
Thomas J. Cashman  
M/M William B. Gage

## A New Look For Geneva Street

*Kim Parker and Lois Morava*

**T**he year 2003 brought a new look to the Kishwaukee Nature Conservancy southern wetland. Fifty feet of invasive species were cleared on the north side of Geneva Street. A controlled burn in the wetland was conducted in April to remove thatch and phragmites, another invasive plant.

Spring brought about a barren looking tract from the burn and brush removal, but Mother Nature provided beautiful plants that were waiting for their chance to bloom in the heated soil.

In 2002, the Boardwalk through the wetland was completed to the Lake Trail. This year, restoration continued by removing 30 feet of buckthorn, honeysuckle, box elder, garlic mustard, and thistle on both sides of the Boardwalk. Only limited plants could grow under the thick canopy of alien species that covered the area.

By removing them and allowing sunlight to reach the soil, many native plants were able to bloom including skunk cabbage, marsh marigold, turtlehead, Joe Pye Weed, cup plant, sawtooth sunflower, anjelica, aster and jewelweed. The plants and colors changed throughout the spring, summer and fall.

A beautiful new sign, designed by Pete Oehman and donated by the Williams Bay Lions, was erected at the entrance of the Boardwalk to make the Boardwalk more visible to visitors.

Come and enjoy the Boardwalk and see all the beautiful native plants.



*Volunteers Dick Bowman(R) and Ed Rynko(L) clear brush from Geneva Street.*

## From the Chairman

Thor Rasmussen

Ben and Matt Lee, our summer interns, were diligent workers in their assigned projects and maintained, mowed and improved the trails.

The KNC projects were:  
In 2003

- Made and erected the Arboretum sign along Harris Road
- Removed dead trees along trails
- Burned wetlands and prairie
- Sprayed thistles, burdock and phragmites with herbicide
- Cleared invasive species along Geneva Street, the Boardwalk and west circle parking lot

For 2004

- Begin old growth woodlands restoration
- Continue clearing both sides of Harris Road
- Spray garlic mustard, purple loosestrife, and thistles
- Harvest wildflower seeds
- Continue to mark and cut down dead trees

## Our Own "Paul Bunyan Team"

Harold Friestad

Ed Rynko joins Debbie and David Gasser as part of a unique group of very active, capable volunteers. Ed, a recently retired diesel mechanic, brings a fantastic work ethic and a great deal of enthusiasm to KNC volunteer workdays.

We had many additional workdays last winter as we cleared the buckthorn trees back for the new section of the Boardwalk. Ed was always among the first to arrive and the last to leave the job sight.

This summer, when we were looking for a third intern to keep the clearing project on schedule, Ed, who was enjoying this new outdoor experience, accepted our offer to fill the position.

When you drive down Harris Road, you get a first-hand look at the extensive work that Ed and the interns accomplished this past six months.

## #1 Target Weed Menace - Garlic Mustard

Lois Morava

Garlic Mustard is a swift-spreading invasive weed that thrives in and along woodlands. In a matter of several years, garlic mustard can crowd out an entire forest floor of wildflowers, ferns and sedges, creating a dense mat of weeds.

First year plants have rounded to kidney-shaped leaves. Second year plants have larger toothed, heart-shaped leaves. Bloom time is May/June with numerous white flowers about a quarter of an inch wide, four separate petals in clusters at the top of the stem.

THERE IS A STRONG ODOR OF ONION OR GARLIC when the plant is rubbed or crushed. Garlic Mustard produces abundant seeds which are spread on the fur of animals, by flowing water, wind, or by human activities.

To control its spread, plants must be pulled, including roots from mid-May to mid-June and removed in plastic bags for

## Harvest Moon Festival

Ray Loyd

The October 10, 2003 Harvest Moon Festival was a great success for the thirteenth year. The harvest moon arrived right on time and cast a golden glow over the festival. Many of the community members walked the trails that wander through the Kishwauketoe Conservancy.

Music was provided by Gary Babler and food by Aurora University. A large fire was available to roast marshmallows and hot dogs. About 200 attended our annual event and enjoyed the fellowship.

Look for our advertisements for the 2004 Harvest Moon Festival next fall. This is a great time to gather together and celebrate the Harvest Moon.



Hotdoggers (L to R) Carter Skolnik, Josh Skolnick, Elizabeth Barry, Claudia Wautlet and Madison Skolnik enjoy the fun of the Harvest Moon Festival.

disposal. It grows in dense stands or beds, in gardens, walkways, trails, roadsides AND the Conservancy.

Source: *The Park People, Friends of all Milwaukee County Parks.*

## Old Growth Woodland Restoration

Alice Morava

It is with great appreciation to the Lake Geneva Garden Club Foundation, Inc. that in 2004 the KNC will be able to begin the restoration of the Old Growth Woodland in the northeast corner (Harris Road and HWY 50) with the grant of \$6,500.

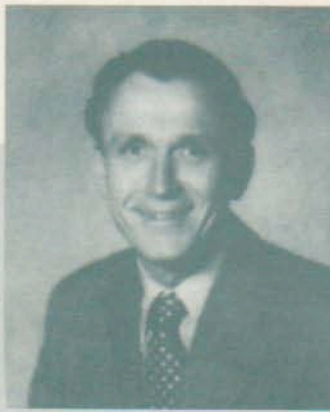
Since the papers were signed establishing ownership to the Village of Williams Bay on March 14, 1990, the ongoing goal of the Commission of Kishwaukee Nature Conservancy has been to develop, restore, protect, preserve and enhance the natural features of the 230 acres.

Woodlands provide an attractive natural resource of immeasurable value. Trees contribute to clean air and water, reduce storm water runoff and flooding, and promote groundwater recharge within watersheds. Woodlands also support a diversity of plant and animal species, providing places for both educational and recreational activities and contribute to seasonal aesthetics of the community throughout the year.

Non-native species are encroaching in the area and need to be removed to permit healthy growth of the oak, maple, walnut, ash, chestnut, butternut and hickory trees.

## KNC Trivia Raptors are Plunderers

Living on prey, these birds have feet modified with sharp, curved claws for seizing prey. Hawks, eagles, vultures, and owls are in this group of carnivorous birds. Look for raptor perches in the KNC.



## Tribute to Bill Gage

David Everhart

All of us who are associated with the Kishwaukee Nature Conservancy lost a true "friend" with the death of William B. Gage on September 17, 2003.

Bill Gage, who was a charter member of the Friends of Kishwaukee, passed away in his sleep as the result of pneumonia and a prolonged illness. He was treasurer of the Friends and a long time, enthusiastic supporter of Kishwaukee and its important mission.

One of his lifelong concerns had to do with the health and welfare of Geneva

Lake and particularly the preservation of the quality of its water. His commitment to enhancing Geneva Lake as a premier destination in the Midwest is well recognized.

Bill, his wife Maggie, who survives him, and their family have contributed generously to assuring an improved quality of life in the Geneva Lake community.

As an officer and active Board member of the Friends of Kishwaukee, Bill has been personally involved in our growth and development. His knowledge of Williams Bay, the Lakes area and its people has been of great value. His solid judgement, enthusiasm, good humor and love of boats were legend. They were appreciated by all who knew and worked with him.

With his zeal and concern for the environment, Bill was truly a man of many interests who had great integrity and high values. He is a "FRIEND" who will be missed.



KNC volunteers watch over the fire of the controlled burn.



## Herb Erickson - Village Father

*Tom Cashman*

Herb Erickson was truly one of the most dedicated Village Fathers in the history of Williams Bay. He served as Village Trustee, Plan Commission Chairman, and Village President.

During Herb's tenure, the Village rejected a huge lakefront development that threatened the very character of the Village. He presided over the Village's development of the lakefront park. This opened the door to the former railroad acquisition and what is now the wonderful Kishwauketoe Nature Conservancy.

His contributions will never be forgotten. Herb died suddenly on February 15, 2003. As a tribute, the Herbert E. Erikson Memorial Fund was established to benefit the KNC.

### Herbert E. Erikson Memorial Fund Contributors

M/M Clarence Thompson  
M/M Peter Geissel  
Leah Osman  
M/M Roger Humphrey  
Mrs. Coe Reynolds  
George Caynak  
Jeffrey Scherer  
Debra J. Alder  
M/M Dwayne Berg  
Louise E. Blakeley  
M/M Mark Masterson

## Herb E. Erickson Memorial Fund

M/M Robb Sorensen	Betty J. Bartholomew
M/M Robert Spotz	John B. Campbell
M/M Richard Kosier	M/M Don Weyhrauch
Gretchen DeWall	Helene M. Thorson
Mary Lou Brown	Robert T. Anderson, Trustee
M/M Vernon Linnemann	M/M Bruce Armstrong
M/M Dale Folkers	M/M Bruce Beckway
M/M Frank Drabek	M/M Fred Utash
M/M James Eichorst	M/M Daniel Summers
M/M James Nelson	M/M Tom Lothian
James P. D'Alessandro	M/M Derek Van Veldhuisen
Virginia Hasek	M/M Lawrence Harrison
M/M Klaus Wellhausen	TRICOR
M/M Donald L. Walker	Darla Thiel
Henriette R. Spruce	M/M John Erickson
M/M Kevin Wellhausen	Anonymous
Arlene Spotz	Alliant Energy Foundation
M/M Lowell E. Sweet	M/M John Nemeth
Lorraine Lane	Laura A. Rodelius
Karen Clapp	Jeanette West
M/M Dennis Ricchio	Linda West
M/M Robert Davis	Richard M. Bartholomew
M/M Robert Henderson	Steven L. Kosier
M/M Michael Hamley	Marie L. Erikson-Kosier
Alice Morava and family	Carolyn B. Gramley
Carol A. Weikel	Joanne C. Allen
Jonathon K. Knauss	M/M John P. Banato. Sr.
Mary J. Bartholomew	
Anne E. Flohr	

Tax deductible memorials are still  
being accepted.

Please make checks payable to:  
Friends of Kishwauketoe, Ltd.  
P.O. Box 580  
Williams Bay, WI 53191

### Volunteer Groups

A volunteer group meets regularly on the fourth Saturday of the month. Bring work gloves, wear sturdy shoes. Watch local papers and the Post Office for meeting time and place.

## "Kish Kids"

Kim Parker and Lois Morava

The KNC is lucky to have many young volunteers. This spring and summer a group from Williams Bay High School helped with the brush removal on the Boardwalk and wetland area.

Sara Kennedy, Maria Martin, Margaret Martin, Ryan Brower, Abby Choyce, Steve Reno, Sheila Robinson and Kyle Schryver helped drag stacks and stacks of brush out of the wetland area to be chipped.

This fall additional "Kish Kids" working along the side of Harris Road removing roots and tree debris were Evan Kelly, Adam Stoll and Sheila Kennedy. Williams Bay High School teacher Jeff Bailey is the advisor to this volunteer group. Students may earn community service credit for their college, work or technical school applications.

Monthly volunteer days are the fourth Saturday of each month from 8 a.m. to noon. Come when you can for as long as you wish. Sign up at school. Refreshments served. Volunteering is a lot of fun, just ask the "Kish Kids."

### Special Thanks

A special thanks to Dr. William Duncan, vice president of Aurora University Lake Geneva Campus for the resources and staff to produce this brochure.



"Kish Kids" and volunteers (L to R) Kim Parker, Ray Loyd, Abby Choyce, Sara Kennedy and Maria Martin

### Gift Giving

As the 2003 tax year comes to an end, remember the KNC. Consider participating in the following gift-giving opportunities.

- Intern scholarships
- Endowments for special projects
- Memorials
- Restorations

Your gift has a double benefit - as a tax deduction for you (We have a 501 (c)(3) status) and a boon to the Conservancy's future.

### Trail Maps

Trail maps for self-guided tours are available in the Conservancy and at the Village Hall.

### Guided Walks

Seasonal, guided walks in the KNC are listed in the local papers, library, radio station, post office, and municipal bulletin boards.

The Conservancy is open every day from dawn to dusk.

### KNC Commission

Chairman Thor Rasmussen, Richard Bowman, Harold Friestad, D. Raymond Loyd, Lois Morava, Kim Parker, Joshua Skolnik

### Friends of Kishwauketoe, Ltd.

President David Everhart, Thomas J. Cashman, Charles L. Colman, June Goss, Alice J. Morava, Thor Rasmussen

To become a FRIENDS supporter, please complete this form and return to KNC • PO Box 580, Williams Bay, WI 53191.

All contributions are tax deductible.

Please make checks payable to:  
FRIENDS of Kishwauketoe, Ltd.

- Family Membership - \$25/year  
 Individual Membership - \$15/year  
 Sponsor - \$50 - \$99  
 Donor - \$100 - \$499  
 Patron - \$500 - \$999  
 Benefactor - Over \$1000

## FRIENDS of Kishwauketoe, Ltd.

Name: \_\_\_\_\_

Address: \_\_\_\_\_

Village/City: \_\_\_\_\_

State/Zip: \_\_\_\_\_

Phone: \_\_\_\_\_

I wish to volunteer at Kishwauketoe Conservancy.

*Kishwauketoe is a not-for-profit organization with a 501(c)(3) status.*