

Dedicated  
July, 1990  
to the  
children of  
tomorrow.

[www.kishwauketoe.org](http://www.kishwauketoe.org)



## *From the Chairman*

Our 2008 Kishwauketoe Nature Conservancy restoration projects have been very successful and very stressful at the same time. During our volunteer workdays over the winter and spring, we removed a large area of box elder trees and buckthorn trees and shrubs. By doing this we achieved our goal of getting more light to Southwick Creek. This allowed us to get native plants growing along the creek banks which has not only stabilized the soil but provided walkers and joggers with a beautiful array of native flowers to view on their daily trek through KNC. The rain this season has made for some difficult times for the interns as both invasive vegetation and native plants have been growing at a rapid pace. This is true both along Southwick Creek and our recently planted thirty acre prairie. Another area of concern is the increase in the water level along the north trail. It appears that that additional water being directed to

this area from the Hwy. 50 project has added a great deal of water to this area. This is good for the ground water and our future pond project, but a problem for those wishing to walk and jog in this area. To reclaim this area for recreation and photo opportunities, we are working on a plan to add a boardwalk in this area.

Kishwauketoe Nature Conservancy continues to be an environmental jewel for the Geneva Lake Community as well as a first class passive recreation area. Please visit our new website, [www.Kishwauketoe.org](http://www.Kishwauketoe.org) to keep up to date on educational programs, volunteer opportunities and our calendar of events.

Kishwauketoe is your conservancy to enjoy and be a part of.....the opportunities are endless for those wishing to get involved.

**Harold J. Friestad**  
Chairman -KNC

## *In Memory of Tom Johnson*

Kishwauketoe Nature Conservancy mourns the passing of Board Member Thomas B. Johnson. Tom passed away suddenly at his winter home in Marco Island, Florida. Tom was also a long time summer resident of Williams Bay residing at 104 Lower Loch Vista with his wife Kathie. Tom, a very successful businessman was known as being a very focused, ethical person with great attention to detail and cooperation. These same values were evident in his private life as a devoted family man, sportsman and volunteer with Kishwauketoe Nature Conservancy.

As an avid fisherman, Tom was prepared to lead the charge in our restoration of Southwick Creek. We have received many memorial donations in Tom's honor towards this project and we will maintain our focus on this project as a tribute to Tom.





## ***Emerald Ash Borer Information Session***

What are those purple boxes hanging from the trees? Join the Kishwaukee staff, UW Extension, and guest speakers from the Wisconsin Department of Agriculture, Trade, and Consumer Protection (DATCP) and find out! Mick Skwarok of DATCP and Becky Gray, Emerald Ash Borer Survey Specialist, will give a presentation on the seriousness of the Emerald Ash Borer problem, followed by a question and answer session.

**Monday, August 4<sup>th</sup>**

**Time: 3:00pm-4:30 pm**

**Location: Williams Bay Village Hall  
250 Williams Street  
Williams Bay, WI**

For more information on this and other

Kishwaukee events visit <http://www.kishwaukee.org>.

This document was funded in part by an urban forestry grant from the State of Wisconsin Department of Natural Resources Forestry Program as authorized under s. 23.097, Wis. Stat.

## ***Trail Map and Guide***

Our new ***Trail Map and Guide*** is available online. It can also be obtained at the Village Hall or the Library, as well as at the Boardwalk and Hwy. 67 trailheads. Allison Deal of Washington DC and Charlie Gary, Marketing Director of Gage Marine donated their time and talents to get this project done. Allison did the work on the trail map that is done to exact scale and Charlie did the artwork. We thank them for their time and effort.

## ***Website***

Thanks to a great deal of hard work and volunteer efforts on the part of Sandra "Punky" Mattison and Cory Militzer, Kishwaukee Nature Conservancy boasts its own website. Punky worked on the design and Cory on the technical programming of this website and through many hours of e-mailing back and forth since early January we were able to go online July 5th. Visit [www.kishwaukee.org](http://www.kishwaukee.org) for an up to date listing on projects and activities. Enjoy reading the history of Kishwaukee and browse through a variety of photos of the area. We also provide you an opportunity to send us your favorite photos and comments about your experiences. The more input you provide, the better the site will be.



## Summer Interns

As a 2008 graduate of Williams Bay High School and a preparing freshman for Edgewood College, I feel fortunate to have been given the opportunity to intern at Kishwauketoe Nature Conservancy.

I have lived in Williams Bay all my life and until this summer I had not been fully aware of all that KNC has to offer. The various wildlife, plant species, and the habitats they thrive in have made me take a definite interest in nature. I feel I have acquired more knowledge than I ever imagined me knowing about the outdoors and in

such a short period of time. The most exciting part of going to work everyday was the chance to learn something new!

My biggest lesson of the summer came with the realization of giving back. Without the help of volunteers and sponsors, KNC would not be the wonderful place it is. So although I will be leaving soon, I will never forget to give back to the place that has given so much to me and the community!

Elizabeth Starck

## Kish Kids Camp

Give the kids one last chance to mingle with the outdoors and learn about wildlife before school begins! Kishwauketoe Nature Conservancy staff and interns will be hosting daily workshops. Please dress accordingly for the weather, and don't forget bug spray and sunscreen!

**August 5, 6, 7th**

**Times:** Ages 6-9 9:30 am—11:00 am  
Ages 10-13 1:00 pm—2:30 pm

**Daily Activities:**

August 5th: Water Cycle  
August 6th: Tree & Woodland Habitats  
August 7th: Outdoor Exercising

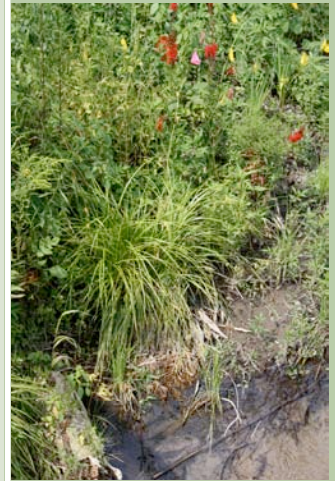
**Location:** Kishwauketoe Nature Conservancy, Williams Bay  
Hwy 67 entrance (across from Subway)

Registration form can be found at [www.kishwauketoe.org](http://www.kishwauketoe.org) under "Events"!!

## Southwick Creek Restoration

The first phase of the Southwick Creek forest project will be wrapping up this fall. From Hwy. 67 north nearly one-quarter mile, the creek has seen major changes. With generous help from volunteers and staff the non-native trees were removed throughout winter and early spring of this year. As the soils began to warm, over 2,000 forbs, sedges and grasses were planted to help stabilize the banks of the creek. Some of these plants included Bottlebrush Grass, Fowl Mana grass, New Jersey tea, Butterfly Weed, Tussock sedge and Long-Beaked sedge. Following the planting, a new path was developed along the western side of the creek and the area was seeded with a mixture of perennial forbs and annual oaks.

Several native trees and shrubs were planted with the help of the grade school children from Williams Bay in celebration of Arbor Day. Three maple trees were planted in recognition of all the work that volunteer Ed Rynko has done. With the blessing of the early summer rains, the plants are maturing quickly and are now in near full bloom. This restoration of the Southwick Creek forest was made possible by the Department of Natural Resources Urban Forestry Grant, the Lake Geneva Garden Club Foundation, the Community Foundation, Geneva Lake Association Intern Grant, volunteers, staff, and the Friends of Kishwauketoe. In 2009, we will continue to move our efforts further north and east along the creek.



To become a *FRIENDS* supporter,  
complete this form and return to:

KNC  
PO BOX 580,  
Williams Bay, WI 53191

Please make all checks payable to:  
FRIENDS OF KISHWAUKETOE,  
LTD.

All contributions are tax deductible.

- Family Membership—\$35/year
- Individual Membership—\$25/year
- Sponsor—\$50-\$99
- Donor—\$100-\$499
- Patron—\$500-\$999
- Benefactor—Over \$1000

[www.kishwauketoe.org](http://www.kishwauketoe.org)

**FRIENDS**  
**Of Kishwauketoe, Inc.**

Name: \_\_\_\_\_

Address: \_\_\_\_\_

City: \_\_\_\_\_

State/Zip: \_\_\_\_\_

Phone: \_\_\_\_\_

I wish to volunteer at Kishwauketoe Conservancy

Kishwauketoe is a not for profit organization with a 501 (c)(3) status.



PO Box 580  
Williams Bay, WI 53191



**Summer/Fall**  
**Newsletter**

## 2008 Summer Staff



From left to right:  
Chrissy Regester, Brad Ames,  
Lizzie Starck, Paul Werner



From left to right:  
Lizzie Starck, Alec Hastings,  
Chrissy Regester



James & David  
Oldeshulte



From left to right:  
Lauren Williams, Paul Werner, Lizzie Starck, Carlene Polk, David Oldeshulte,  
Chrissy Regester, James Oldeshulte



# Kishwauketoe Day Celebration!

Saturday, August 9th

9:00am-12:00pm

at the Kishwauketoe Nature Conservancy

Highway 67 entrance

Join the Friends of Kishwauketoe and the Kishwauketoe Board of Directors for Kishwauketoe Day. Guided hikes through the conservancy will highlight prairie restoration, wetland restoration, invasive species control and tree identification, and nature crafts for the kids!

## Schedule of events:

**9:00-9:45am** Guided tours of Kishwauketoe

**10:00-11:00am** GEO Caching & GPS demonstration

**10:45am** Tree Identification hike & Wetland hike

**10:00-11:30am** Children's book reading & nature handkerchief craft

**11:30am** Aldo Leopold reading & Kishwauketoe discussion

**Lemonade, coffee, & cookies  
will be available through out the morning**

---